



From the Principal Maria

Welcome back everyone to the term. It was lovely to see all the children and parents back on Tuesday after the holidays. The children all returned with smiles on their faces and seemed very excited to be back which is just wonderful.

The grade is working well and the children all seem very settled and eager to build on their learning. Lachlan, our prep student, has made the transition to school seamlessly and is already familiar with our routines in and out of the classrooms.

This term is already looking very busy with various events organised for the students.

Upcoming Events:

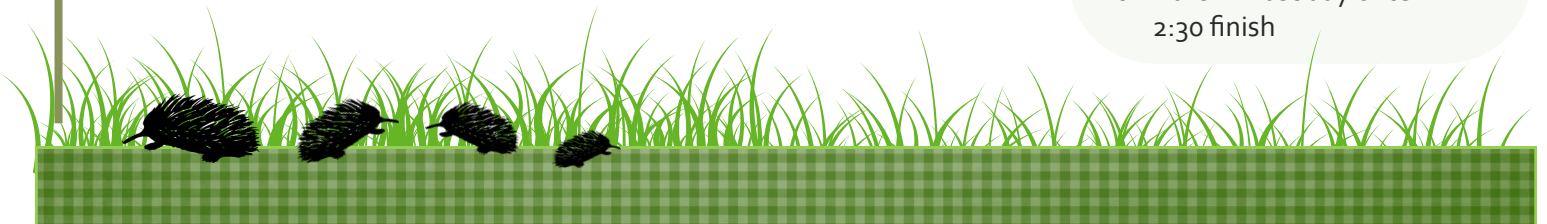
Sailing: Next Wednesday (7/2) we will be heading off to Sugarloaf Reservoir Park to take part in some sailing lessons. This has been organised through the sailing club with qualified instructors. We will be travelling by car and leaving school at 10.00am and returning at approximately 2.30pm. Just a reminder to pack lunch, snacks, drink bottles, towel, hat and a change of clothes. Children need to wear "SunSmart" clothing and we ask that sunscreen be applied prior to coming to school. Please pack sunscreen in a plastic bag so that we can remind students to reapply throughout the day. We will also have shade for students to sit when on the shore.

Athletics: These sessions will be delivered by an external sporting group and commence on Wednesday 14/2 and will run over four weeks. This is a great opportunity for students to participate in a range of activities and develop new skills.

Term One 2nd February, 2024

Important Dates for Term 1

- 7th February - Sailing excursion
- 14th February - Athletics PE incursion
- 19th February - School Council meeting—3:45 pm (Webex link to be sent)
- 20th February - Hockey incursion
- 21st February - Athletics PE Incursion
- 22nd February - Hockey Incursion
- 26th February - new playground commencing
- 28th February - Athletics PE - incursion
- 1st March - Healesville swimming carnival
- 6th March - School photos
- 8th March - Curriculum day
- 11th March - Labour day public holiday
- 13th March—NAPLAN
- 28th March—Last day of term—2:30 finish



Hockey: We have Hockey Victoria coming on Tuesday 20/2 and Thursday 22/2 to teach children how to play hockey, introducing them to the game and the associated rules for safe playing.

Bush School: This will be commencing in the next couple of weeks and will run over the term. We have engaged Eco Explorers again to deliver the programme to our students and we know that students are always very excited to take part in this amazing programme.

School Photos

These have been organised for Wednesday 6th March at 9.30 am.

Enrolments

We are continuing to promote our school and work hard to increase enrolments within our local community. We encourage all families to get the word out about our wonderful school and the programmes we provide. If you know of anyone in the area who have children who will be starting school next year in 2025, please encourage them to contact us and arrange a school tour. We will be offering some "taster" sessions for prospective 2025 prep students this term. Also, our playgroup will be commencing next Tuesday 6/2.

CHPS 150 Year Birthday Celebration

Our school will be celebrating its 150-year birthday this year and we are organising a community celebration on Saturday 4th May inviting past students and those with a connection to the school to attend. There will be lots to organise prior to this event and any assistance you may be able to provide would be greatly appreciated. More information to come so stay tuned!

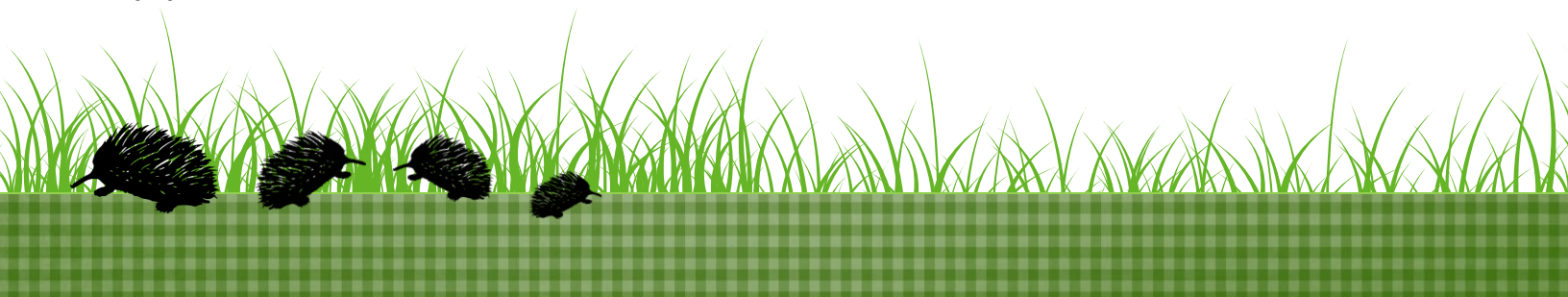
Sensory Garden – Inclusive School Fund Project

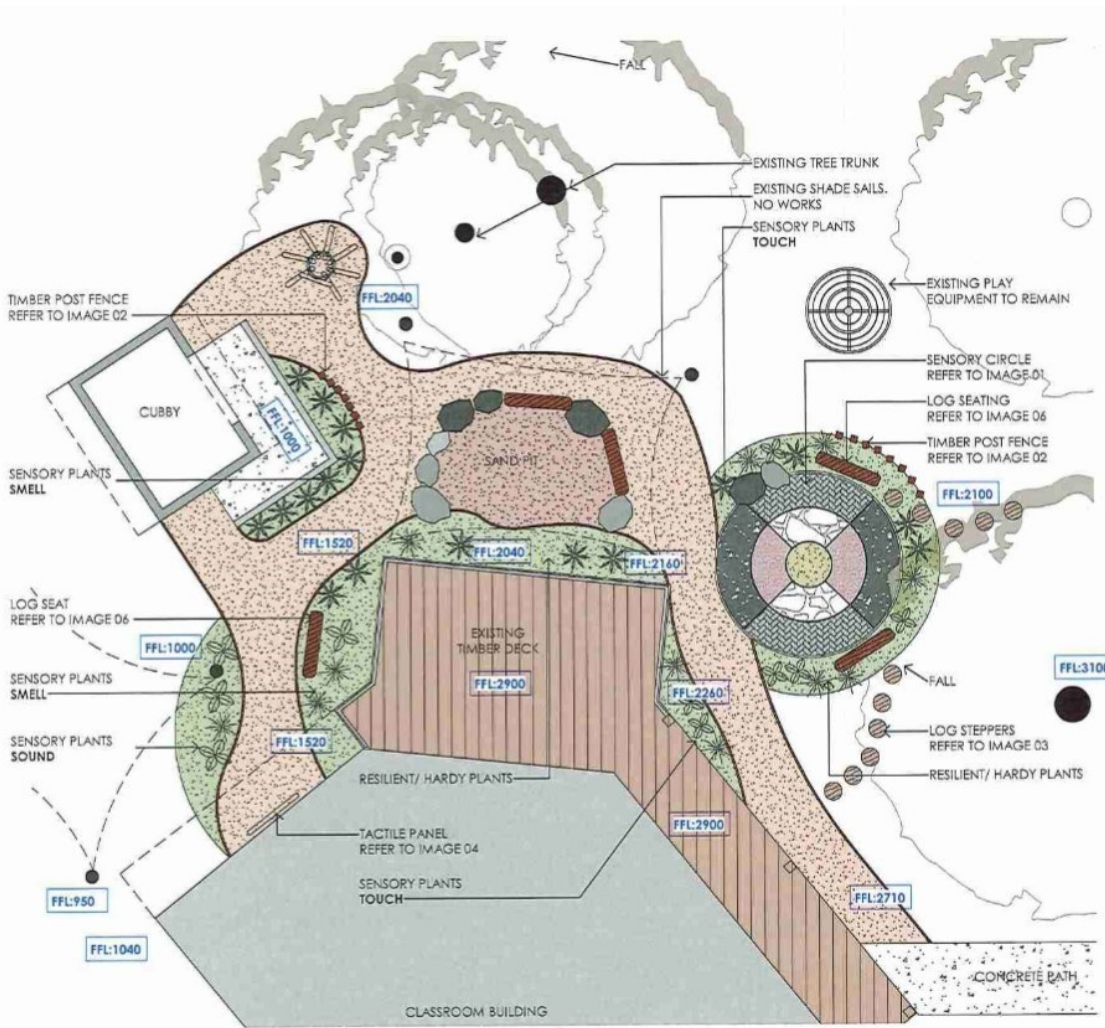
Our sensory garden project will be commencing on Monday 26/2. Modus Projects have been approved for the job and will set up on site on the Monday. The job is scheduled to take 5 weeks with handover taking place on Thursday 28/3 which is the last day of term 1.

We are very excited for the project as it will support student wellbeing by encouraging exploration and discovery.

Lastly, thank you to those parents for their voluntary contributions – these funds go a long way in supporting the school to provide a range of programmes.

Maria





1. SENSORY CIRCLE



2. BAL FZ RATED TIMBER POST FENCE.



3. BAL FZ RATED LOG STEPPERS. REFER TO S-08 FOR DETAILS



4. TACTILE PANELS



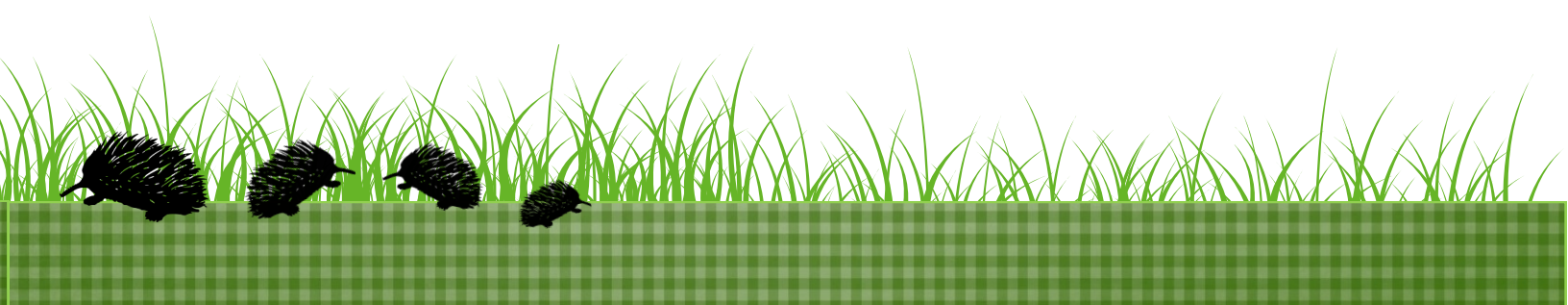
4. TACTILE PANELS



5. BAL FZ RATED TEEPEE



6. BAL FZ RATED LOG SEAT.

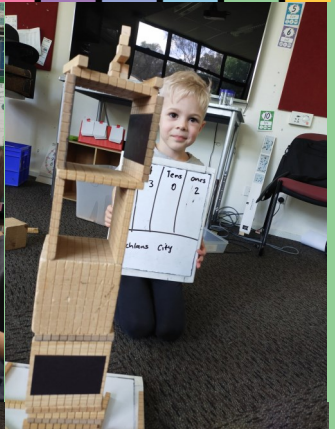




OUR WEEK



AT C.H.P.S



Listening
 Being kind
 Caring for our friends
 Putting your hand up
 Keeping the classroom clean
 Asking teachers for help
 Being inquisitive / asking questions
 Being persistent
 Being inclusive
 Being honest
 Giving it a try / Trying things on our own

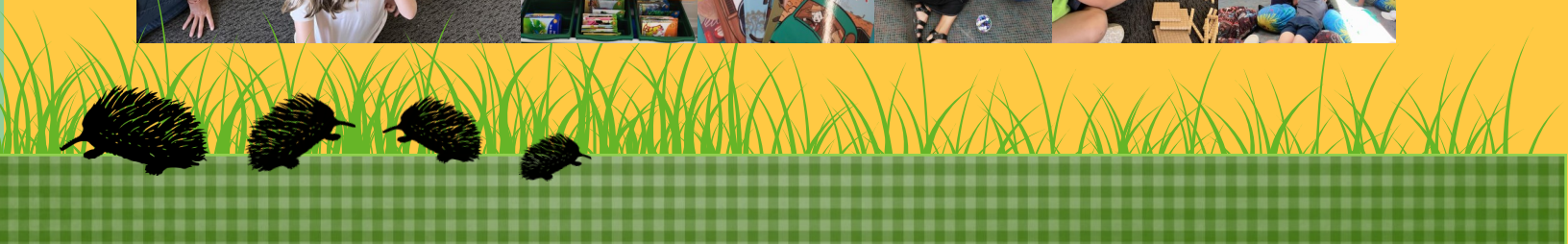
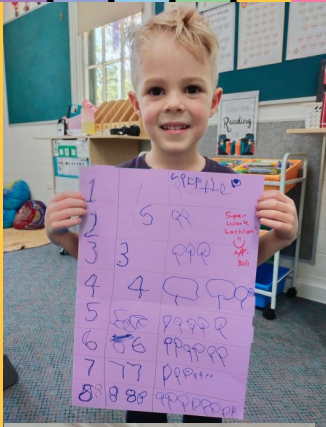




OUR WEEK



AT C.H.P.S



CHRISTMAS HILLS PRIMARY SCHOOL **PLAYGROUP**

9:30am - 11:00am
Every Tuesday morning



**EVERYONE
WELCOME**

Playgroup will be held in the
Christmas Hills
Primary School Library
9730 1238
1409 Eltham Yarra Glen Road
Christmas Hills



THE

DARK HORSE



CHPS LUNCH ORDER MENU

Nuggets & Chips \$7
Burger & Chips \$7
Napolitana Pasta \$7
Chips \$4
Party Sausage Roll \$2
Party Pie \$2

Chocolate Milk \$3
Strawberry Milk \$3
Orange Juice \$2.5
Apple Juice \$2.5

Zooper Dooper \$2

LUNCH ORDERS EVERY WEDNESDAY

***PLEASE WRITE YOUR ORDER AND CHILD'S NAME ON A BROWN PAPER BAG AND
ENCLOSE CORRECT MONEY.***

LUNCH ORDERS ARE DUE TO THE OFFICE NO LATER THAN 3:30PM TUESDAYS



Call us to arrange a tour
9730 1238
0499 205 083

1409 Eltham-Yarra Glen Rd,
Christmas Hills, Vic 3775
Christmas.hills.ps@education.vic.gov.au

Being SunSmart in Victoria



When **UV** is **3+**



Slip on covering clothing



Slop on SPF50, broad-spectrum, water-resistant sunscreen



Slap on a broad-brimmed hat



Seek shade



Slide on sunglasses (AS:1067)

Think **UV**, not heat! UV rays can't be seen or felt and can damage your skin on cool or cloudy days.

When **UV** is below **3**

Sun protection isn't required unless you are outdoors for extended periods or near reflective surfaces, such as snow.



Download the **SunSmart Global UV app** to find sun protection times for your location.

March 2023



Scan the QR code or visit sunsmart.com.au/app to download.



Newsletter article: Schools in Category 0, 1 and 2 on the Bushfire At-Risk Register

This information has been developed to answer frequently asked questions regarding the Bushfire At-Risk Register (BARR) and your school's pre-emptive actions on elevated fire danger days.

School preparations for the bushfire season

Each year, to prepare for bushfires and grassfires, schools and early childhood services complete a range of activities.

The Department of Education runs an annual fire risk assessment of schools and early childhood services. They are allocated a category of risk (categories 0 to 4) and are published on the Bushfire At-Risk Register (BARR).



On elevated fire danger days schools in the highest levels of risk (categories 0, 1 and 2) take pre-emptive actions to minimise the risk of being caught in a fire in these conditions.

These actions are based on the Local Government Area they are in and their fire risk category.

In addition, all schools and services listed on the BARR and Category 4 list will close when a Catastrophic fire danger rating day is forecast in their fire weather district.

When the Bureau of Meteorology provides public fire danger rating forecasts, they use fire weather district areas. In Victoria, there are 9 fire weather districts, which include numerous Local Government Areas. Our school is in the **Central fire weather district**.

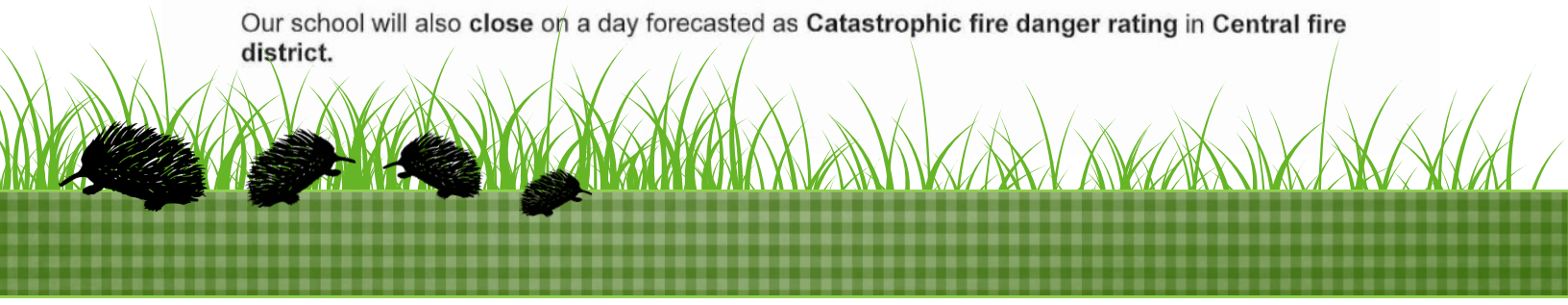
As part of preparing our school for the fire season, we have updated and completed our Emergency Management Plan and such as reprioritised any maintenance works that may assist in preparing for the threat of fire and cleared our facility's grounds and gutters.

What does this mean for our school?

Our school has been identified as being in one of the highest fire risk categories - BARR 1

Our school will action its pre-emptive plan for **relocation** on a day forecasted as **Extreme fire danger rating** in our **local government area (LGA), Nillumbik**.

Our school will also **close** on a day forecasted as **Catastrophic fire danger rating** in **Central fire district**.



What is the department's policy?

The department's [Bushfire and Grassfire Preparedness Policy](#) requires schools at high risk of bushfire to enact pre-emptive action plans based on LGA level fire danger forecasts. Conditions can vary significantly across the wider weather district, so using local forecasts helps us to respond appropriately to risks in our local area and maintain stability and educational continuity for our students and school community. This policy is consistent for all schools at high levels of risk and this approach is supported by emergency services.

The policy also requires that all schools and early childhood services on the BARR and the Category 4 list close when a Catastrophic fire danger rating day is forecast in their fire weather district. All school bus routes which travel in or through a district with Catastrophic fire danger must also be cancelled.

When will our school enact our pre-emptive action plan?

Our school will action our pre-emptive plan to **Kangaroo Ground Primary School** on days when the fire danger forecast for our local government area, Nillumbik is **Extreme**.

Our school will use the LGA forecast confirmed by emergency services the day before an Extreme fire danger day in our LGA to trigger our plan. We will let you know when we are enacting our pre-emptive action plan. Please be aware that no one will be on site on days where the school has enacted this plan.

What do we do when our LGA has a different fire danger rating to the wider fire weather district?

As we respond to local conditions, there may be days during the fire season when our fire weather district, Central is forecast as an Extreme fire danger rating, but our LGA is at a lower level of fire danger. On these days our school operations will continue as normal, however we will be taking action in line with fire services advice by:

- checking our Emergency Management Plan and taking any necessary preparedness actions
- actively monitor our local conditions and warnings
- having plans and procedures in place for if a fire starts to support us to take immediate action.

While our school will continue to operate, we encourage our school community to consider their own [bushfire survival plan](#) and reassess any travel through bushfire risk areas. We encourage you to follow your family bushfire survival plan and the advice of emergency services.

There may also be days where our LGA is forecast as Extreme fire danger, but Central is not. On these days we **will** enact our pre-emptive action plan.

When will our school be closed due to Catastrophic fire danger?

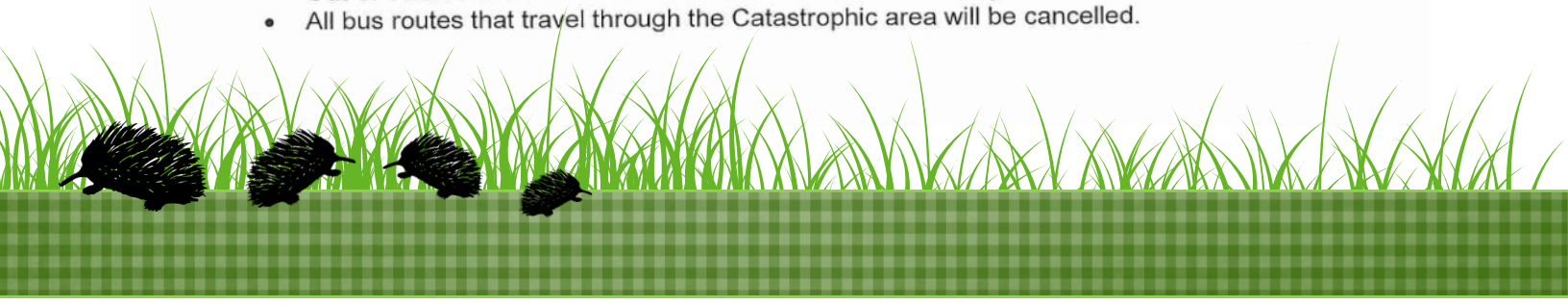
Our school will also **close** on a day forecasted as **Catastrophic fire danger rating in Central fire district**.

Closure of the school due to a forecast Catastrophic day will be confirmed on the day prior and we will provide you with advice before the end of the school day. Any information regarding potential or confirmed Catastrophic fire danger days will be communicated to you by Sentral

Once confirmed, the decision to close will not change, even if the weather forecast changes.

This is to avoid confusion and help your family plan alternative care arrangements for your child. It is also important to be aware that:

- No one will be on site on days where the school is closed due to a forecast Catastrophic day.
- Out-of-school-hours care will also be cancelled on these days.
- All bus routes that travel through the Catastrophic area will be cancelled.



- School camps will be cancelled if a Catastrophic fire danger rating day is forecast for fire weather district in which the camp is located, or if the travel involves passing through areas that have Catastrophic fire danger.

Families are encouraged to enact their Bushfire Survival Plan on Catastrophic fire danger rating days. **On such days, children should never be left at home alone or in the care of older children.**

For those of us living in a bushfire prone area, the Country Fire Authority (CFA) advises that when Catastrophic days are forecast, the safest option is to leave the night before or early on the morning of the Catastrophic day.

What can families and the school community do to help us prepare?

- Ensure we have your current contact details, including your mobile phone numbers.
- Keep in touch with us by - reading our newsletters, checking our website <https://www.christmashillsps.vic.edu.au/>, by talking to your child's teacher or any other member of the teaching staff about our emergency management plan.
- Make sure your family's bushfire survival plan is up-to-date and includes alternative care arrangements in the event that our school is relocated or closed due to fire danger. Further information can be found on the [CFA's website](#).
- Enact your family's bushfire survival plan if your own triggers are met. Our school community may be spread out across many areas and some families may be at higher risk than others. Your family's safety is critical, so please let us know if you are enacting your bushfire survival plan and if your children will be absent on these days.
- If your child is old enough, talk to [them about bushfires](#) and your family's bushfire survival plan.

You can find more information on emergencies, and preparedness actions here:

- VicEmergency app – that can be downloaded on your android and iOS mobile devices
- VicEmergency Hotline (1800 226 226)
- Website <https://emergency.vic.gov.au>
- Facebook (<https://www.facebook.com/vicemergency>)
- Twitter (<https://twitter.com/vicemergency>)
- ABC local radio, Sky News and other emergency broadcasters



HOCKEY VICTORIA SCHOOL ROADSHOW

Welcome to the Hockey Victoria School Roadshow. We are really excited to be sending our coaches to your school to provide your students with a fun and enjoyable hockey experience to start the year.

We hope you are looking forward to the experience. We would love to help promote the upcoming hockey sessions through your school network. The following templates will give you all of the information to promote the sessions or you can use your own information!

Promotion Via a School Newsletter

If you want to promote the Hockey Victoria Roadshow via your newsletter, we have provided a pre roadshow and post roadshow template that you can utilise.

(Pre-Roadshow Newsletter Post)

We are excited to welcome the Hockey Victoria Roadshow to our school!

Students are being given the fantastic opportunity to try out the exciting game of hockey! They will learn the skills of the game through exciting game-based activities suited to every year level and ability.

Hockey Victoria will be sending their amazing Participation Officers to our school in the coming weeks to provide an engaging, fun, and safe hockey experience for everyone.

At Hockey Victoria they pride themselves in providing an enjoyable experience for every student, so keep an eye out and see if you can spot one of their coaches at school soon!

If you enjoy the sessions during school, you can continue with your hockey experience by joining a local Hookin2Hockey program www.hookin2hockey.com.au. With programs all over the state you can find a local program that will suit your schedule.

(Post-Roadshow Newsletter Post)

It was a fantastic experience having Hockey Victoria recently attend our school as part of their roadshow program. Our students learnt the skills of hockey through exciting game-based activities in an engaging, fun and safe environment.

While the roadshow is over, students can continue their hockey journey by joining a local Hookin2Hockey program at www.hookin2hockey.com.au. With programs starting soon now is the perfect chance to get out on the pitch.

Hookin2Hockey will allow children to expand on the skills they recently learnt at school, develop fundamental motor skills while making friends and having fun!



Promotion Via a School Newsletter

To assist with your posts, we have provided a number of digital resources that you can utilise alongside the templates. The resources include a number of different images however we would encourage the school to take pictures of your students participating in the roadshow and use your own local images. These images can be found here: <https://drive.google.com/drive/u/0/folders/16fEQQ1wnB-ffakv1gYnXTh-ssMupE58g>

Social Media Templates

In addition to newsletters, we encourage to promote the roadshows via any social media channels that you have. We have provided templates below.

(Social Media Post)

Hockey Victoria Roadshow stops at our school!

We are excited to be participating in the Hockey Victoria school roadshow. Hockey Victoria coaches have visited our school, giving our students a taste of the sport through exciting game-based activities in an engaging, fun, and safe environment.

If you enjoyed the roadshow experience and want to continue with hockey, you can sign up to your local [Hookin2Hockey program](#) now. With local programs starting next week it is the perfect chance to get out on the pitch.

Hockey Victoria Facebook Page - <https://www.facebook.com/hockeyvictoria>

Hockey Victoria Facebook Handle - @hockeyvictoria

Hockey Victoria Instagram Handle - @hockeyvictoriaofficial

Caring Honesty Inquisitiveness



Christmas Hills Primary School

At CHPS we show our CHIRPS by...

Respect Persistence Sharing

Yard	Transitions	Classes	Toilets	Excursions
Hear calm, polite and friendly voices	Calm, organised	Be mindful of personal space	Good hygiene	Be good role models
See inclusive play with a variety of activities	Enter learning spaces in an orderly manner	Take responsibility for your own learning	Respect others' privacy	Hear calm, polite and friendly voices
See people caring for each other		Respectful listening		Be mindful of the general public
Respect nature				Move in an orderly, calm manner

SCHOOL UNIFORM

C.H.P.S



UNIFORM PRICES

- Polo shirt size 6,8,12,14- \$15
- Polo shirt - Adult S,M, L - \$21.50
- Wide brim hat - \$15
- Communication satchel - \$15
- Child vest - \$17.90 Adult 21.20
- Blue gingham dress- \$18
- Grade six top - \$46